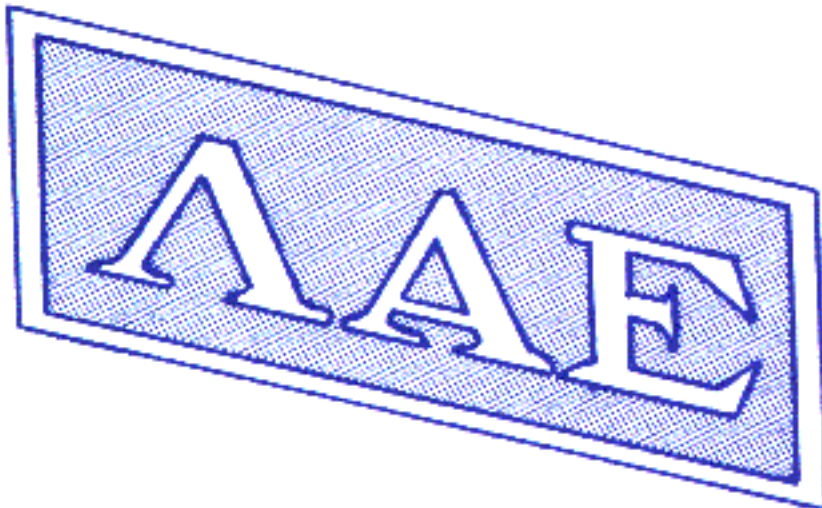


# American Criminal Justice Association LAMBDA ALPHA EPSILON

## Emblem

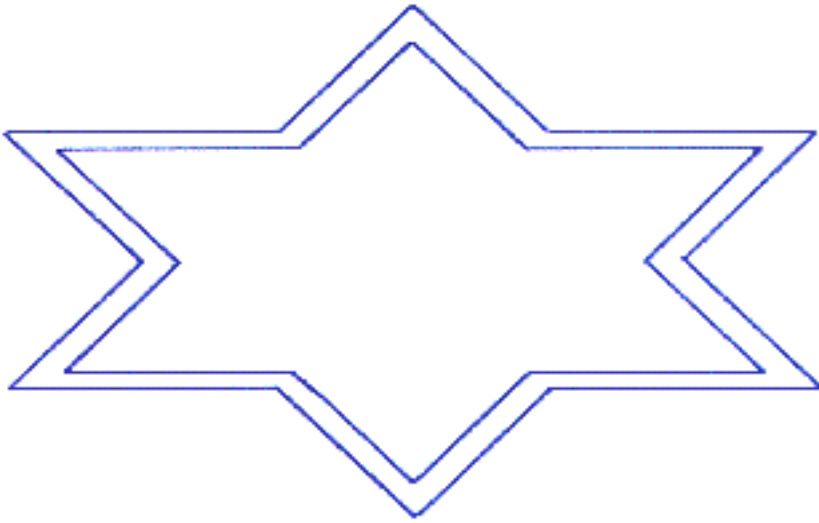
---



The emblem of the American Criminal Justice Association - Lambda Alpha Epsilon consists of a hexagon upon which is inscribed three Greek letters, Lambda, Alpha and Epsilon; a web, a star and a pair of scales. Each of these figures has a particular significance for us in the field of criminal justice.

The Greek letter "Lambda" is the first letter of the Greek word "Lambano" which means "to detect and apprehend". "Alpha" is the first letter of the Greek word "Anakrinen" meaning "to adjudicate". "Epsilon" is the first letter of the Greek word "Exorthoun" which translated means "to rehabilitate". The three letters taken together are representative of the primary functions of criminal justice systems everywhere; to detect, to

adjudicate, to rehabilitate.

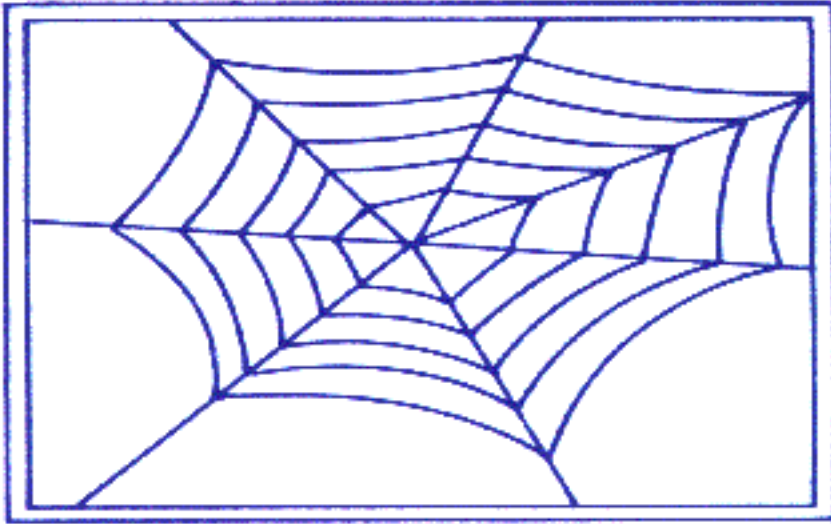


The star is representative of the light of knowledge. The truth of the adage "Knowledge is Power" becomes more apparent each day. Now, more than ever, those of us who are committed to the criminal justice system appreciate that only by acquisition and dissemination of knowledge, can we hope to perform an adequate service to our communities. In our oath we have obligated ourselves to be both a teacher and a student of the art and science of criminal justice. Let this star constantly remind us of our dedication to the pursuit of knowledge.



Traditionally, scales are emblematic of justice. As criminal justice agents, we are committed to deal with our respective tasks honestly, truthfully, and without prejudice. The evidence of our skill is the ability to consummate our tasks with the highest degree of professional integrity possible.

As criminal justice agents, we are charged to detect, to apprehend, to prosecute, to adjudicate, and to rehabilitate criminal offenders whenever and wherever they come before the system. As members of the American Criminal Justice Association - Lambda Alpha Epsilon, we know that these objectives can best be achieved through the just administration of the art and science of the criminal justice system.



The web symbolizes that great complexity of criminal activity. The edges of this web are anchored to our national boundaries from state to state and city to city. The web has a second significance for criminal justice agents. It accentuates the multitude of agencies dedicated to cope with this massive dilemma. Each act of agency cooperation helps eliminate a strand in the web of crime making it progressively easier to deal with this enormous social problem.

| [Home](#) | [Objectives](#) | [History](#) | [Benefits](#) | [Executive Board](#) | [Bylaws](#) | [Emblem](#) |

| [National Conference](#) | [National Competition Standards](#) | [Regional Conferences](#) |

| [Chapters](#) | [Links to Chapters](#) | [Other Links of Interest](#) | [Contact Us](#) |

Copyright 2007, American Criminal Justice Association, All rights reserved  
P.O. Box 601047, Sacramento, CA 95860-1047 Telephone (916) 484-6553 Fax (916) 488-2227  
Send comments on this web to [acjalae@aol.com](mailto:acjalae@aol.com)